

Joplin High School



Pride Band Manual 2024-2025

for Band Members and Parents

A complete digest of Band Policies and Regulations

Philip Soule, Director of Bands

Doug Dicharry, Assistant Band Director

Cheri Wright, Assistant Band Director (East MS)

Chandler Glasgow, Assistant Band Director (South MS)

Maggie Moncado, Assistant Band Director (North MS)

Scott Murphy, Drumline Coordinator

Natalie Kayser, Guard Coordinator

Aurora Glaubitz, Assistant Guard Coordinator

Philip Soule * philipsoule@joplinschools.org * (417) 625-5230

Marching Band

1. MSHSAA Dead Period – No Contact Period is June 29-July 7. During this time, the Band staff is not allowed to have any contact with students and/or parents. These dates are set for all of the Fine Arts.

2. Home Football Games - Students will report to JHS at 4:30pm to get into uniforms and load equipment. We will take buses over to Junge Stadium. Once we get there, we will unload equipment and start warming up our pre-game music. We will play in the stands during the 1st Quarter. We will start warming up for the half-time show during the 2nd Quarter. After we are done at half-time, we will head back to our area and eat dinner, which will be provided by the Band Boosters. Students have 3rd Quarter off, but will need to be with their section in the bleachers at the start of 4th Quarter. Students are required to remain in full uniform unless instructed otherwise by a director. At the conclusion of the game, we will finish loading equipment and head back to JHS. Once all equipment is put away, students are dismissed. Friday night games normally last until 10:00PM. Family and alumni are encouraged to stop by and visit any time. We do allow family and alumni to sit over by the band during games.

3. Competitions and Parades - The band will attend several marching competitions and parades during the school year, the location and number of which will be decided annually by the directors. Attendance at all competitions and parades are required. AN UNEXCUSED ABSENCE FROM ANY COMPETITION/PARADE/PERFORMANCE WILL RESULT IN A ZERO IN THE GRADE BOOK AND THAT ASSIGNMENT CAN NOT BE MADE UP.

4. Rehearsals - In addition to regular/daily morning rehearsals before school, which begins (8/21) at 7:30AM. The marching band will also rehearse Thursday evenings (starting 8/22) during marching season from 5:00-8:00PM at the High School. On selected practices, the band will use Junge Stadium and those dates are still TBD. These rehearsals will go until 9PM.

5. Guard/Drumline will also have additional evening rehearsals that will be scheduled and determined by our guard/drum line sponsor and/or technicians. Attendance is required for both rehearsals! Failure to show will affect grades and/or performances at competitions and/or home football games.

6. Students will need to have a flip-folder, lyre, music, and dot charts at all times.

7. Leadership Team

- a. The leadership team is vital to the program. They are chosen based on their ability to be a servant leader, their understanding of the goals of the program, and their willingness to grow the program towards its goal. Leadership team will meet once a week throughout the year to provide the staff with vital feedback on student needs, concerns and joys. ANY LEADER THAT MISSES 2 MEETINGS OR IS NOT FULFILLING THEIR DUTIES - WILL BE REMOVED FROM THEIR POSITION. These students should be the first to arrive and last to leave both practices and/or performances.

8. Memorization Deadlines - Show Music

- a. Mvt 1-3 - August 5-9
- b. Mvt 1 Retest - August 12-16
- c. Mvt 2 Retest - August 19-23
- d. Mvt 3 Retest – August 26-30
- e. Full Show Retest - September 2-6 (last date to pass tests without penalty)

Symphonic Band

1. Home Concerts - The Symphonic/Concert Band will give several concerts throughout the year which includes, but not limited to: Christmas/Winter Concert, Finale Concert and Commencement. There may be other concerts scheduled that pop up throughout the year that aren't listed here. Students are still expected to attend.

2. Away Concerts - An effort will be made for the symphonic band to travel to area schools and communities as opportunities arise. These may or may not occur during school hours.

3. Festivals - The Symphonic/Concert Band will participate as a large ensemble at the MSHSAA State Evaluative Music Festival held at Webb City HS each spring. Other festivals may be scheduled as deemed necessary by the directors.

4. Conference Band - This event consists of an honor band formed from all of the schools in our conference and conducted by a guest clinician. Interested students should sign up for the band and will be selected based on playing ability, attitude and interest. Previous honors will be considered as criteria for selection. The All-Conference Band performs in conjunction with the All-District Band. More details will be announced later.

5. All-District Band - All members are eligible and strongly encouraged to audition for this ensemble. It is made up of the best band students from all the schools in our district. There will be one concert band for the students to participate in. Auditions occur on November 5th, 2024 at Carthage HS. More details will be announced later.

6. All-State Band - This elite ensemble is made up of musicians from across the state of Missouri, all of whom are members of their local District Band. The audition materials are the same as for All-District Band, with the exception of the addition of minor scales. You must have been a member of your All-District Band to audition for All-State Band. Auditions are held the first Saturday in December at Columbia Hickman High School (December 6-7th, 2024). This ensemble rehearses and performs during the Missouri Music Educators Association State Convention held (January 29 - February 1, 2025) at the Margaritaville Lake Resort on the Lake of the Ozarks.

7. Brass, Percussion, and Woodwind Choirs - These ensembles will be formed with members of the Symphonic Band in the spring for the purpose of performing in concerts and at the State

Music Festival held at Webb City HS. They may also perform at various school and community events as the opportunities arise.

8. AN UNEXCUSED ABSENCE FROM ANY COMPETITION/PARADE/PERFORMANCE WILL RESULT IN A ZERO IN THE GRADE BOOK AND THAT ASSIGNMENT CAN NOT BE MADE UP.

Jazz Band

1. Any person who plays an appropriate jazz instrument and is enrolled in regular band class is eligible to participate in the Jazz Band, with director approval through an audition process. Jazz Band is designed for those students who'd like to explore this genre of music. These ability-based groups rehearse every day during the 2nd and/or 3rd hour. Occasionally, players who play an instrument (piano, guitar, bass) that is not used in the regular band are allowed to audition. Auditions will be held each spring for musicians wishing to participate. A student may not drop band class and be in jazz band only.

2. Home Concerts - The Jazz Band performs a minimum of two concerts per year, scheduled by the directors. There may be other concerts scheduled that pop up throughout the year that aren't listed here. Students are still expected to attend.

3. Away Concerts - The Jazz Band travels to area schools and communities as the opportunities arise for performance. Some of these will occur during school hours, some will occur outside of school time.

4. Home Basketball Games - The Jazz Band performs at selected boys and girls varsity basketball games (home). The performances may include playing between JV and Varsity games and during half-time of the Varsity game. Attendance is required and a grade is assigned.

5. Competitions - The Jazz Band may participate in several competitions during the year, the location and date of which will be selected by the directors.

6. All-District Jazz Bands - Anyone is eligible to audition for the District Jazz Band, provided they are a performing member in their own jazz band. Members who are selected for this ensemble are eligible to audition for the All-State Jazz Band. The district audition will be held on Tuesday, November 5th, 2024 at Carthage HS. If a student is selected for this group, they will have a performance in conjunction with the Junior High Honor Band. More details will be announced later.

7. All-State Jazz Band - This elite ensemble is made up of musicians from across the state of Missouri, all of whom are members of their local District Jazz Band. The audition materials are the same as for All-District Jazz Band, with the exception of a sight-reading opportunity. You must have been a member of your All-District Jazz Band to audition for All-State Jazz Band.

Auditions are held the first Saturday in December at Columbia Hickman High School (December 6-7th, 2024). This ensemble rehearses and performs during the Missouri Music Educators Association State Convention held (January 29-February 1, 2025) at the Margaritaville Lake Resort on the Lake of the Ozarks.

8. AN UNEXCUSED ABSENCE FROM ANY COMPETITION/PARADE/PERFORMANCE WILL RESULT IN A ZERO IN THE GRADE BOOK AND THAT ASSIGNMENT CAN NOT BE MADE UP.

Solos and Ensembles

1. Everyone is encouraged to participate in solos and small ensembles throughout the year. Although we usually think of this activity occurring during the spring for Music Festival, year-round participation is strongly encouraged. See the directors for help in choosing music and forming ensembles. Those seriously considering lettering in band will want to consider at least one solo and one ensemble.

2. Public Performances - This includes performing for local clubs (Rotary, Lion, etc...) and churches, and recitals. The more performances you or your ensemble give, the better you will perform and the less nervous you will become!

3. School Recitals - Throughout the year, you will be given the opportunity to perform in recitals. This will take place during school hours and everyone is encouraged to give it a try.

4. Festivals - Solos and Ensembles that participate in the District Music Festival and receive a "Gold" rating will qualify to compete at the State Music Festival in Columbia towards the end of April. "Gold", "Silver", or "Bronze" ratings will also be awarded at the state level as well. More information will be given to the students when it gets closer to the event.

Private Lessons

1. Students are strongly encouraged to study privately on their instrument with teachers in the Joplin and surrounding communities. Ernie Williamson and Palen Music Center offer lessons as well as some professors at MSSU. In addition, the community has many talented musicians who are well qualified to teach an instrument. The cost of lessons varies with the experience of the instructor, but regardless, it will pay off in the amount of accelerated progress that will occur in your ability to play your instrument. Remember that lessons alone will not turn you into an outstanding player. Nothing can take the place of dedicated hard work on your part and you know what that means...PRACTICE! If you are interested in taking lessons, see the directors for information regarding who to contact.

Social Activities

1. Band Camp Party - Band members and family are encouraged to attend. More details will be discussed during band camp.
2. Band Awards Banquet- This informal event is held in the spring of the year and features the presentation of numerous awards to band members. The event location and date will be determined at a later date.
3. Other activities (Basketball, movies, softball, etc...) will be scheduled throughout the year as the ideas arise.

Credit

1. A student is required to have one full credit of fine arts in order to qualify for graduation.
2. Marching Band, Symphonic/Concert Band, and Jazz Band all give the student 1 credit per year of participation that may be applied toward the fine art credit for graduation.
3. A student must be enrolled in Band in order to enroll also in Jazz Band. Exceptions are occasionally granted (by the director) for instruments not normally found in the concert band, such as: electric guitar, bass guitar and piano. No student may drop out of band and enroll in Jazz Band only.
4. Students must be enrolled in band for the full year. It is not a semester course! Occasional exceptions may be granted, with director approval, for extenuating circumstances, such as a student moves in after school begins, etc.. If there is an issue with student behavior, the director will initiate the process for removal.
5. All 1st hour band students must attend zero hour during the Marching Band season. This class will also occasionally need to meet before school during the contest season. All school attendance policies apply to zero hour.
6. In order for students to be MSHSAA eligible, which will allow them to compete, they must earn 3.0 credits per semester. The fall semester affects spring eligibility, while the spring semester affects the next falls eligibility. Please stay on top of your grades and make sure you are enrolled in enough classes each semester.

Awards

1. Band Letters - Each student is eligible to receive a band letter, provided the total number of points needed for the year has been earned by the student. For a concise breakdown of the points system and the total number of points needed to letter, see the final page of this manual.
2. District and State Music Festival medals will be awarded to all participants in the following events:

- a. District Solo/Ensemble– “Exemplary” or “Outstanding” rating
- b. State Solo/Ensemble - “Gold” or “Silver” or “Bronze” rating
- c. MSHSAA Large Ensemble Festival “1/Exemplary” or “2/Outstanding” rating (State Level Only)
- d. Woodwind/Brass/Percussion Choir “Exemplary” or “Outstanding” rating (State Level Only)

3. John Philip Sousa Award - This is given to the outstanding senior band musician each year. It consists of a desk piece, pin and certificate along with having the recipient’s name engraved on the plaque which will hang in the high school band room.

4. Louis Armstrong Jazz Award - This award is given to the outstanding senior jazz musician. It consists of a desk piece, pin and certificate along with having the recipient’s name engraved on the plaque which will hang in the high school band room.

5. Patrick Gilmore Award - This award honors another outstanding high school band student and their achievements and commitment to the band. It consists of a desk piece, pin and certificate along with having the recipient’s name engraved on the plaque which will hang in the high school band room.

6. Woody Herman Award - This award honors another outstanding high school band student and their achievements and commitments to the band. It consists of a desk piece, pin and certificate along with having the recipient’s name engraved on the plaque which will hang in the high school band room.

7. Director’s Award for Band – This award honors outstanding members of the junior or senior high school band program.

All-District and All-State Band

1. All-District and All-State Requirements

- a. Auditions will require knowledge of ALL 12 Major and ALL 12 Melodic Minor Scales, which are to be memorized and played as written. Also, the chromatic scale should be played the full range of the student’s instrument. The Melodic Minor form of the scale will raise the 6th and 7th scale degrees on the way up (by a ½ step) and lower them back to the natural minor scale on the way down. The natural minor has the same key signature as its major scale. For example, if we start on C Major (no sharps or flats) and go to the 6th scale degree, which is “A”. We would play A to A using the key of C Major. A, B, C, D, E, F, G, A, which is our “A” natural minor. In order to fit the melodic minor form, we would raise the 6th and 7th up a ½ step and play A, B, C, D, E, F#, G#, A on the way up.
- b. A select number of etudes will be required each year. See one of the directors for copies of the etudes you will need to prepare. Music can be found on our website (a. www.joplinbands.org) under the “Music” tab.

- c. Some judges will require you to sight-read during your audition, especially if it is a call-back or 2nd audition (at the All-State level).

Sight-reading

1. Each student will be required to take a sight-reading test during the first or second semester of school. It may not be a formal test but rather done in class as a group to help prepare for our adjudicated festival.
2. The sight-reading score and performance of the All-District tryout music will be an important part of the students' grade for the semester. Students are encouraged to do their best on these tests.
3. The order the kids rank in district placement, as well as their sight-reading score will be used to help place students in section order for the concert season.

Proper Tone and Embouchure

1. Each player is expected to perform with the tone consistent with their instrument. Proper embouchure formation, instrument placement and posture are all required to allow the best tone to come forth.

Musical Terms

1. Each student should know the definitions and correct spellings for the terms used in music played by each student throughout the year.

Band Regulations/Discipline Policies

1. To avoid tardies during the concert season, be IN YOUR SEAT before the bell rings with your INSTRUMENT OUT and ready to go!
2. To avoid tardies during the marching season, be ON THE FIELD, IN YOUR SPOT, WITH YOUR EQUIPMENT and ready to go!
3. NO FOOD, GUM, AND BEVERAGES ARE ALLOWED IN THE BAND ROOM OR ON THE FIELD DURING REHEARSALS. WATER IS ENCOURAGED!
4. NO STUDYING, READING OR DOING HOMEWORK FROM ANOTHER CLASS WILL BE PERMITTED DURING REHEARSAL. Make a contribution to each rehearsal.

5. You are expected to have your instrument, pencil (on your stand), and music for each rehearsal.
6. If you are going to be absent or late for a rehearsal, please contact Mr. Soule. If he cannot be reached, please contact one of the Assistant Directors and Section Leaders.
7. Time-for-Time Rule is set up for students who miss a practice, concert, competition, etc.. that has been approved/excused by the directors. The student will be required to stay after school to make up for the time that they have missed in order to get caught up. Students may also schedule time to work with their section leaders as well. Remember, if it is unexcused, it can't be made up.
8. Take your instrument(s) home EVERYDAY so you may practice. Failure to do so may result in an assigned "academic detention."
9. Foul or abusive language or gestures shall not be used during any band activity or in the presence of any staff member. Be a good leader, student, and set the example.
10. If you get it out, put it away!
11. If you need help - ask for it!
12. Meet deadlines! If you don't, there will be direct consequences which will be handled according to the school discipline policy. In the event a student blatantly and/or maliciously causes a serious classroom disruption, the severe disciplinary clause will take effect and the student will immediately be taken to the principal's office.
13. If students are found to have tobacco, alcohol, or any other inappropriate substance on a trip, parents/guardians will be called to come get them and they will be dealt with by an administrator on the next school day.
14. Cell phone usage is strictly prohibited during class times. Cell phones used during class will be taken to the principal's office. All school policies apply during football games, marching competitions, jazz festivals, basketball games, winter drum line, winter guard, band concerts, and performances. While I prefer The Tonal Energy App, students may use another tuning app in class, but if caught using the phone for any other purpose, school policies will be followed.
15. Communication - "Like" the Joplin High School Bands Facebook page. This Facebook page will be run by the Band Boosters and will have a lot of useful information for both parents and students about events, fundraising, competitions, etc. The Band Directors will only use ParentSquare to send out communication to both students and parents. We also have a website (www.joplinbands.org) that has a lot of resources available for both parents and students. Canvas is where students should check on grades

16. Transportation Policy - This policy applies to all travel. Students are under the direct supervision of Mr. Soule and any other Directors/Sponsors., Students are not to leave the premises (gym, motel, hotel, etc..) without a sponsor. Students must ride the bus to all events (unless prior approval has been granted by one of the principals) and are encouraged to ride the bus home. However, if a student must leave early from an event, they must be signed out by one of their parents and/or guardians. If you need to ride home with another student and their parents, it must be approved by one of the principals at least 1 day before the event. It will not be allowed on the day of the event. No exceptions. Parents/Guardians should sign out with the Band Directors that were on the same bus as the student. This will help speed up the attendance process so that we can make sure we are not leaving anyone behind.

Grading

- a. A 90-100%
- b. B 80-89%
- c. C 70-79%
- d. D 60-69%
- e. F 59% and Below

I. Percentages will be rounded up when grades are figured at 0.5% and up. In example, 95.5% will become 96%. The final band grade is cumulative.

II. As a performance-based class, we will be grading on 35% Academic Practice, 55% Academic Assessment, and 10% Semester Final. Below is a list of what will be considered Academic Practice versus Academic Assessment.

1. Academic Practice - Before school rehearsals, after school rehearsals, and/or any homework required that would potentially lead up to a test/performance. Daily ensemble skills or "Essential Musicianship" skills are vital to a performance-based class. This also includes pencil checks, music checks, binder and folder checks, etc...

2. Academic Assessment -Marching competitions, home football games, scales, memorization of music, playing tests over concert music, concerts, pep band games for jazz band, state large ensemble contest, and commencement, etc...

3. Playing Test - These will be given periodically throughout the term. Some will be announced in advance, while others will be unannounced. These tests will cover scales, etudes, and any music in the folder.

4. Written Tests - These will be given regularly, usually covering basic knowledge of terms and symbols or information covered in class or in the Band Manual. Study sheets will sometimes be given prior to written tests.

5. Participation/Essential Musicianship - Each rehearsal will carry a participation grade which makes up a large portion of your overall quarter grade. To receive the total number of points, in

participation, simply be on time with your instrument and music, fully participate, and enjoy the class. Rehearsals receive 20 points per occurrence, while performances receive 100 points per occurrence. Tardies, absences, and rehearsal behavior do affect this part of your grade.

6. Instrument/Lyre/Flip-Folder/Folder/Music/Pencil Checks - This will be a periodic check to see if you have all of these materials for class. This is an announced, pass/fail exam. In order to get the points, these items must be readily available prior to the check. Any student needing help with purchasing these items needs to visit with one of the directors.

7. Attendance – Each student earns points per day for being present and working hard in class. Students should be present as much as possible to avoid loss of their weekly Essential Musicianship kills. Students missing a band event with an excused absence have the option of making up the points by staying after school or completing a make-up assignment. Must be turned in by Friday of the following week or it stays as a 0 in the gradebook.

8. Tardies - Tardies are accumulated by the semester and follow the school handbook policy. Students that are tardy earn only 15 participation points per day for being present. Reminder, for every 3 tardies...it counts as 1 absence when it's time to figure out final exemptions. Attendance and timely arrival are a must for earning accumulated points.

9. MSHSAA State Evaluative Festival or Contest - 2nd Semester is dedicated to preparing for this one-shot, one-time type of performance event. This grade will hold a significant portion of a student's grade (400 points) as it will be more weighted in the grade book. It is important that every student stays on top of their grades and fines and doesn't have ISS or OSS in order to attend. This event /experience can't be replicated; therefore, a make-up assignment will be on a case-by-case basis. If a make-up is allowed, sight-reading will also be a graded component.

School Equipment

1. Uniforms/Instruments

- a. The school owns marching uniforms which are issued to JHS band members. Uniforms will be issued by the booster parents, the directors, and the uniform manager. At the time of issue, students and parents will be held responsible for the care of the assigned uniform and its accessories. A uniform cleaning fee of \$15 will be collected from each student at the beginning of the marching season. We prefer to clean the uniforms ourselves (dry cleaners) at the end of the season, however, if the uniform becomes soiled during the season, the student should have the uniform cleaned as often as necessary. Take pride in them! Any item that is issued to the student from the school – that student/family is responsible for it. If lost or damaged, those families are responsible to cover those fees.
- b. At each performance, the student will pick up their plume (if we use them) as they leave to perform. After each performance, those items will be returned to the person in charge of them. Replacement cost on a uniform, gauntlets, and plume is approximately \$500+.

Uniform pants should be hung as a pair of dress pants and coats must be zipped up completely.

- c. Band members will be issued a marching jacket, pants, hat, hat box, plumes, hat wraps, hip cape, gauntlets, garment bag, and a hanger. NO EXTRA ITEMS ARE TO BE PLACED IN THE GARMENT BAGS as they tear easily. Each band member must wear his or her own pair of black shoes (these will be ordered through the director), black socks, and black gloves for every marching performance. If the student is missing anything, they will not be allowed to perform and therefore their grade will be affected.
- d. Each Symphonic/Concert Band student will need to dress in solid black for all concerts and will need to be provided by the student. Ladies dresses or skirts must hit well below the knee and be paired with black hose or tights. Ladies may also wear black dress pants. Ladies tops should have a modest neck line and a sleeve. Men should wear black dress pants and a black collared shirt. Remember, the point of black concert dress is to not attract attention to individuals. If the student is missing anything, they will not be allowed to perform and therefore their grade will be affected.
- e. Guard members will use either the show costumes as our parade uniforms or wear all black like we've done in the past. In addition, the guard will also individually purchase their field show uniform, which they will own at the end of the season. Guard members will need to purchase certain accessories as decided by the guard instructor.
- f. There is only one correct way to wear the uniform - ALL parts fastened including hooked at the neck. The uniform must be worn completely unless otherwise directed by one of the staff members.

Instruments

1. The school owns many instruments, including piccolos, bass clarinets, oboes, bassoons, tenor saxophones, baritone saxophones, french horns, mellophones, trombones, euphoniums, tubas and percussion equipment. These instruments will be issued by the directors through Charms to those students who are selected to play them. Students and their parent(s)/guardian(s) are solely responsible for the up-keep of the instrument. Any item that is issued to the student from the school – that student/family is responsible for it. If lost or damaged, those families are responsible to cover those fees.

2. In addition, those students and parents will be responsible for all repair and upkeep of the instrument beyond that of normal wear.

Financial Obligations

Overview

Our band program has an annual budget in excess of \$40,000 to cover transportation, instrument purchases, repairs, uniform cleaning, music purchases, clinicians, tresona fees, choreographer fees, drill writer fees, wind and percussion writer fees, etc..which happen to be some of our most expensive budget items. We take on the challenge to fundraise this amount each and every year to support the existence of our band program at the high school level. However, most of the funds are raised from various fundraisers, sponsorships, donations, etc. To fairly contribute to their membership in the band, we charge each member a “Fair Share Fee”. Students can meet this amount in various ways as described below. Keep in mind that no student will be excluded from the band due to financial hardship; please speak with the director if you are in such a situation. However, everyone is still expected to put forth a valiant effort towards fundraising.

Student Accounts

Each band student will have an individual account assigned to them. This allows the band program, parents, and students to accurately keep track of all fees assessed to students and amounts they have fundraised. Every effort will be made to keep the balance up to date as payments are processed. Funds in excess of the “Fair Share” may be applied toward purchases of equipment, uniform parts, or trip costs, etc.. The balance of this account may be rolled over to the following year and applied toward future fees. Once the student graduates or leaves the band program, for any reason, all remaining funds in the student account will be transferred into the band general account or a sibling’s account upon request. These are funds raised in the name of and for the JHS Bands and will be used exclusively for the band’s purposes.

Fair Share Fee

This year’s required “Fair Share” Fee will be \$200 per band member. Guard members “Fair Share” Fee will be \$250 per member. The \$55 non-refundable deposit will be subtracted from those totals. Parents may simply write a check to cover this fee or students may participate in the fundraising opportunities. Students who do not contribute their “Fair Share” Fee will be added to the JHS Debt List. Everyone is expected to fundraise to cover the costs of the band program.

Other Costs

Students will have to pay for uniform parts (gloves, shoes, socks, etc.), extra t-shirts, black shorts, red polos, field trips, instrument rentals, competitive show shirts, and all maintenance and supplies needed such as oil, reeds, flip folders, lyres, etc.. Many of these items are included in the fair-share fees. Some items are required to be purchased individually.

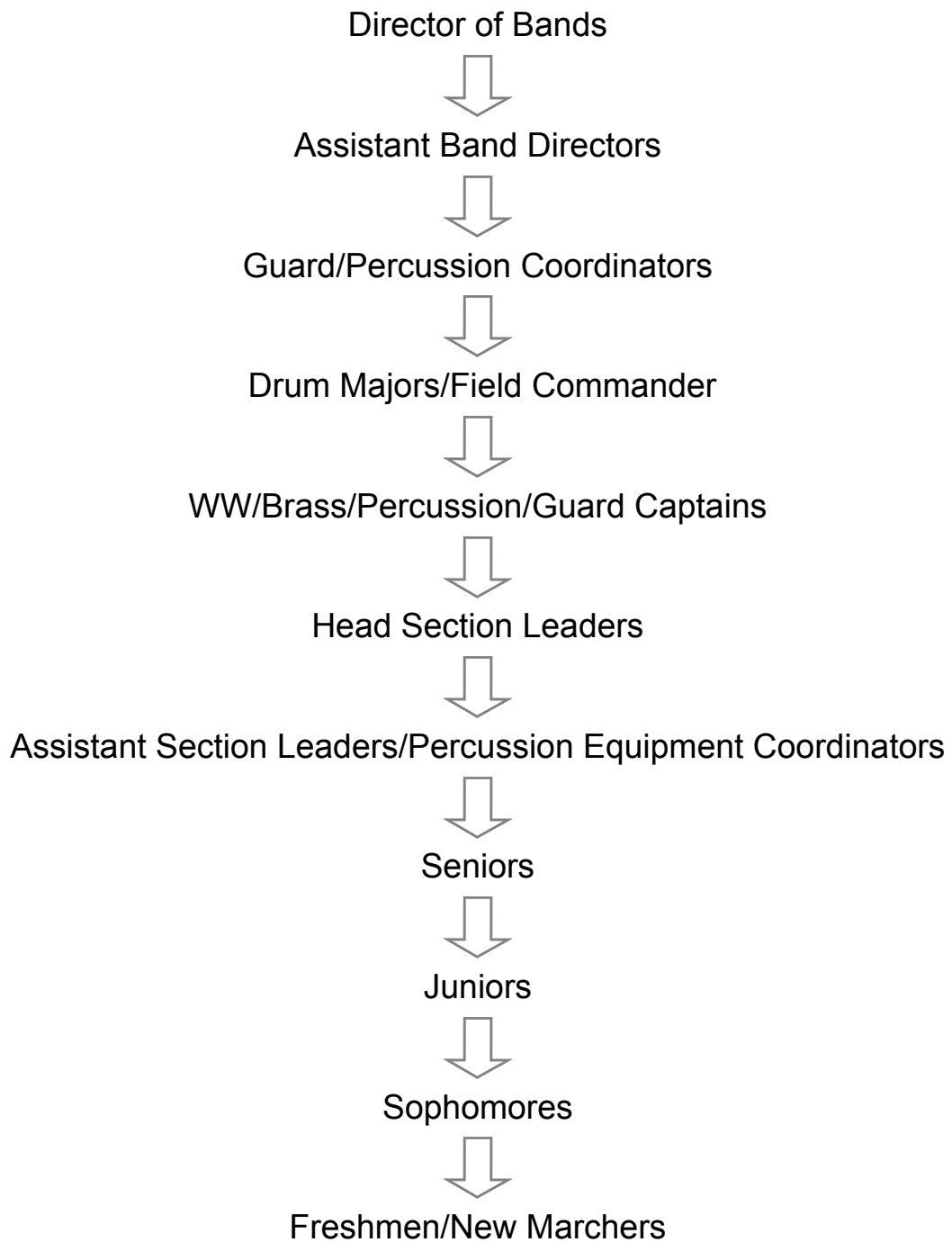
R. Music

1. Sheet music is the textbook of any band class. Students are expected to take care of music and turn it in undamaged. Music may be marked IN PENCIL ONLY.
2. LOST OR DAMAGED MUSIC MUST BE REPLACED BY THE USER. COSTS WILL VARY BY THE PIECE and SHIPPING COSTS WILL BE INCLUDED!

3. All handouts in band classes are free, but replacement costs will apply for lost materials. \$1 per page will be assessed for handouts, .50 cents per page will be assessed for marching music and \$1 per page for full size music.

The Music department is governed by the rules and policies of the Missouri State High School Activities Association (MSHSAA) as well as the Joplin School District policies. This includes both behavior and eligibility!

S. Chain of Command



T. Band Lettering Point System

Due back by Friday, April 4th.

TOTAL NUMBER OF POINTS NEEDED TO LETTER IS 1800.

Fall Guard Camp.....	10pts per rehearsal
Fall Color Guard Member.....	50 points
Fall Drum Line Camp.....	10pts per rehearsal
Fall Drum Line Member.....	50 points
Leadership Camp.....	10pts per rehearsal
Marching Band Camp.....	25pts per rehearsal
Marching Band Pep Assemblies.....	20pts per performance
Marching Band FB Games.....	20pts per performance
Marching Band Competitions (include Finals).....	50pts per performance
Winter Drum Line Member.....	50 points
Winter Guard Member.....	50 points
Show Choir Band Member.....	50 points
Leadership Team (Drum Major – extra 50 pts).....	100 points
Jazz Band BB Games.....	10pts per performance
Jazz Band Concerts/Performances/Festivals.....	50pts per performance
Concert Band Concerts/Performances.....	50pts per performance
Audition for All-District.....	25 points
Audition for All-State.....	50 points
All-District Ensemble Member (Concert, Jazz).....	250 points
All-District Alternate (Concert, Jazz).....	150 points
All-District Honorable Mention (Concert, Jazz).....	100 points
All-State Ensemble Member (Concert, Jazz).....	500 points
All-State Alternate (Concert, Jazz).....	300 points
All-State Honorable Mention (Concert, Jazz).....	200 points
Honor Bands.....	150 points
District Ensemble “Gold”.....	150 points
District Ensemble “Silver”.....	100 points
District Ensemble “Bronze”.....	50 points
District Solo “1”.....	200 points
District Solo “2”.....	150 points
District Solo “3”.....	100 points
State Ensemble “Gold”.....	200 points
State Ensemble “Silver”.....	150 points
State Ensemble “Bronze”.....	100 points
State Solo “Gold”.....	250 points
State Solo “Silver”.....	200 points
State Solo “Bronze”.....	150 points
Brass/WW/Percussion Choir “Gold”.....	200 points
Brass/WW/Percussion Choir “Silver”.....	100 points
State Large Ensemble “Gold”.....	250 points
State Large Ensemble “Silver”.....	100 points
Solo/Ensemble Recital.....	25pts per performance (play at church, etc)
Private Lessons.....	50 pts per semester
Director Assistance (Librarian, Room Monitor, Loading Crew, etc..).....	20 pts per hour

Total _____points

Joplin High School

Band Contract

2024-2025

I/We, in contract with the Joplin High School Band and teachers, Mr. Philip Soule and Mr. Doug Dicharry, agree to abide by the guidelines, rules, and regulations set forth in the Joplin High School Band Handbook of which I/We have received a copy.

I/We fully understand and agree to abide by the guidelines and regulations contained in the Joplin High School Bands Handbook, which includes but is not limited to the following:

- A) Members must abide by the rules stated in the Joplin Student Handbook and Code of Conduct and must display courteous and appropriate behavior at all times. Members who choose to continue to disrupt class or who choose to not abide by those rules and regulations of either JHS Band Handbook or the JHS Handbook (i.e., consistently missing rehearsals or performances; disrespectful or rude behavior, public display of affection; smoking; use of alcoholic beverages or drugs; violations of dress code; disciplinary placement in ISS or OSS; and/or other items contained in the JHS Student Handbook) will be dismissed from the band at the end of the semester and will not be allowed to re-enroll in the course.
- B) Members must maintain passing grades (earn 3 credits per semester to be MSHSAA eligible) and have good attendance, to be eligible to participate in extracurricular activities. Furthermore, students must be eligible according to the Board of Education's policy requirements on eligibility before they can participate in any extra-curricular activity or event.
- C) In addition, in order to participate in auditions, competitions, or other performances, members must have been present for rehearsals and must have learned the music/drill as specified and to the satisfaction of the directors.
- D) Members must attend all rehearsals and performances designated by the director, whether it is before, during, or after school hours.
- E) Members who elect to drop out of Band must do so **before July 1**. Students that drop band after the marching season has started will be responsible to help cover any additional fees that our music, drill, and/or choreographers may charge due to their absence/removal from the group. Furthermore, if a student is dismissed from the class, they relinquish all privileges of performing, or receiving any honors and/or recognition accrued before, during, or after termination of membership and will not be allowed to re-enroll in Band or Jazz Band. In addition, students who elect to drop-out mid-semester and/or mid-year could possibly receive a failing grade for the class and will not be reimbursed any fees. (Please keep in mind that Marching Band is an expensive activity that takes a lot of time, effort, and planning to put together and all we are trying to do is keep the integrity of the group intact, so we can have a successful season.)
- F) Members must return the CONTRACT and have it signed by the parent or legal guardian before they will be allowed to travel with the Band.

G) Members are 100% responsible for all parts of the uniforms, costumes, music, folders, flip folders, lyres, props, etc... that may be issued to them. Members will be responsible to pay for any damages or loss to any items belonging to the school or band that has been issued to them.

H) Marching Band students will need to pay a non-refundable (\$55) fee to the Joplin Band Boosters by the last day of the current school year in order to reserve their spot for the following year; however, as mentioned above, students must know their music, drill, be present, etc...to the satisfaction of the directors. If students are not meeting those requirements, they will not perform; we must hold them to a higher standard.

I) If the Band takes any future trips, the priority for chaperones will be given to the Band Booster members who regularly attend the monthly meetings, which occur on the 2nd Monday of each month.

By signing this contract, I/We acknowledge that I/We have read, understood, and will fully comply with all guidelines, rules, and regulations of the JHS Band Program as set forth in the JHS Band Handbook.

STUDENT SIGNATURE

DATE

PARENT(S)/GUARDIAN(S)

DATE

The contract and non-refundable deposit is due by Tuesday, July 1st. Please make sure you complete ALL necessary forms that will be available on PowerSchool as part of the school registration process. In addition, please fill out all of the forms that are posted on our website (www.joplinbands.org). No student will be allowed to travel, perform, or practice without these forms on file. Physicals must be completed BEFORE Band Camp (July 29th). If your doctor will allow it...make sure to get a 2-year physical!! FREE PHYSICALS ARE at JHS on MONDAY, JUNE 3rd!!